



MINI PRISLISTE. NOVEMBER 2018.

MINI Cabrio	Effekt hk	Forbrug km/l	CO₂ emission	Energi- klasse	Vejl. udsalgs- pris dkr.
COOPER CABRIO	136	17,9	127	B	312 100
COOPER S CABRIO	192	14,5	157	C	393 300

Priserne er gældende for produktion fra 1. november 2018 og frem til ny prisliste fremkommer.

Prisen er inkl. leveringsomkostninger på kr 3980,-

Udstyrpriser är baseret på 85% afgift.

Vedfælde af tilvalg af optioner kan nogle optioner blive beregnet på 150% afgift.

Der tages forbehold for evt. fejl og ændringer, samt ændring i registreringsafgift.



EXAMPELS OF STANDARD EQUIPMENT ON THE MINI CABRIO:

- Dynamic brake lights
- ISOFIX child seat mounting Front & Rear
- Anti-Lock braking system (ABS)
- Crash sensor
- Electronic braking force distribution
- Tire pressure monitoring system (TPMS)
- Two stage Airbag system
- Side airbags
- Brake wear indicator
- Electrically adjustable exterior mirrors
- Engine start & stop function
- Remote control key with driver profiles
- Multifunction steering wheel
- Wind deflector
- Choose any colour you want*
- AUX and USB in connections
- 15" Alloy wheels, 2F0
- Air conditioning
- Heated windscreen washer jets
- Heated exterior mirrors
- Seat heating for driver and front passenger
- Warning triangle
- Central locking system
- Mechanically adjustable seats
- Adjustable steering column
- Foldable backseat
- Locking wheel bolts for alloy wheels
- Electronic vehicle immobiliser
- eCall emergency system

*Except "Rebel Green" and "Lapsis luxury blue"

In addition on Cooper S

- 16" alloy wheels, 2F3
- Performance control
- Sport leather steering wheel
- More colours to choose from

In addition on John Cooper Works

- 17" alloy wheels, 2HX
- Anthracite head liner
- Sport suspension settings
- Rear spoiler
- LED head lights
- JCW steering wheel
- JCW sport seats
- Driving modes selector

PACKAGES FOR THE MINI CABRIO.

Z1M Essential

Velour floor mats
 Height adj. front passenger seat
 Storage package
 Automatic air condition
 Rain sensor
 On-board computer
 Ambient lightning and light package
 Sport leather steering wheel
 16" alloy wheels
 PDC rear
 Centre armrest front
 LED head and fog lights incl. Union Jack LED rear
 Connected Media w. 6,5" touch screen
 Connected drive Services

Z2M Experience

in addition to Essential
 Chili or JCW-package
 Sport seats & Upholstery upgrade
 17" wheel upgrade
 MINI yours interior illuminated
 PDC front and rear w. park assist
 Comfort access system
 Interior mirror with anti-dazzle

Z3M Maximise

in addition to Experience
 Complete mirror package incl. fold-in
 Adaptive Matrix LED head lights
 Head up display
 Active Cruise control & Driving assistant
 Harman Kardon sound system
 Rear view camera
 MINI Connected Navigation plus.
 8,8 inch touch screen w. split display
 Apple CarPlay™
 Real Time Traffic Information

Model			Essential	Experience	Maximise
F57	WJ31	COOPER CABRIO	350 715	395 740	505 696
F57	WJ51	COOPER S CABRIO	443 050	481 724	591 681

Prices are valid for production from 1st of November 2018 and until a new pricelist is published.

Prices include delivery fee of 3980 DKK.

Option prices are based on 85% in registration fee.

When choosing options, some of them can become calculated with 150% in registration fee.

Data are based on base model with standard wheel. An upgrade of wheel can lead to increased emissions and fuel consumption.

Following wheel upgrades effect the Co2-emissions: 2B0,2ED,2ET,2F1,2F2,2HN,2HW

SINGLE OPTIONS.

X = Optional equipment

O = Standard equipment

= not available

		Cooper	Cooper S	Vejl.ud- salgspris dkr. 85%	Vejl.ud- salgspris dkr. 150%
7KQ	John Cooper Works Trim	X	X	17 343,28	23 436,87
	Only with Z2M/ Z3M	X	X		
	not with 7Y1 / 7Y2	X	X		
	Equipment: 2HW (alternatively: 1NF/2E4) + 2XC (alternatively: 2XB) + 325 + 3A1 + 423 + 450 + 493 + 4AA + 4V9 + 4VA + 521 + 534 + 544 (alternatively: 541) + 550 + 563 + 5A1 + 5A2 (alternatively: 552) + 785	X	X		
223	Adaptive suspension	X	X	7 226,40	9 765,41
	only with 4VA	X	X		
225	Standard suspension			0,00	0,00
226	Sport suspension settings	X	X	2 890,59	3 906,21
2VG	Performance Control	X	O	2 167,90	2 929,60
	in combination with 7KQ	X		0,00	0,00
	only with 7HN / 7KQ	X			
302	Alarm system	X	X	4 624,92	6 249,89
359	Visibility package	X	X	3 613,11	4 882,59
	in combination with Z1M / Z2M / Z3M	X	X	2 167,90	2 929,60
	only with 521	X	X		
	only with 530 / 534	X	X		
654	DAB tuner	X	X	3 613,11	4 882,59
6A1	Always Open Timer	X	X	2 312,37	3 124,83
322	Comfort access system	X	X	4 191,34	5 663,97
	in combination with Z2M / Z3M			0,00	0,00
4VA	MINI Driving Modes		X	4 046,70	5 468,51
		X		2 601,48	3 515,52
	in combination with Z2M / Z3M	X	X	0,00	0,00
541	Active Cruise Control	X	X	5 781,02	7 812,19
	in combination with Z2M	X	X	2 167,90	2 929,60
	in combination with Z3M	X	X	0,00	0,00
	only with 5AS	X	X		
544	Cruise control with braking function	X	X	3 613,11	4 882,59
	in combination with Z2M	X	X	0,00	0,00
	in combination with 2XB / 2XC	X	X	0,00	0,00
5AS	Driving Assistant	X	X	8 527,14	11 523,17
	in combination with Z3M	X	X	0,00	0,00
674	HiFi loudspeaker system Harman Kardon	X	X	11 417,74	15 429,38
	in combination with Z3M	X	X	0,00	0,00
6AD	MINI Head-Up Display	X	X	8 671,61	11 718,40
	in combination with Z3M	X	X	0,00	0,00
6NW	Telephony with wireless charging	X	X	5 202,97	7 031,04
	in combination with Z3M	X	X	0,00	0,00
	only with 2XB / 2XC	X	X		
	only with 473	X	X		

EXTERIOR.

X = Optional equipment
O = Standard equipment
= not available

		Cooper	Cooper S	Vejl.ud- salgspris dkr. 85%	Vejl.ud- salgspris dkr. 150%
320	Model designation, deletion	X	X	0,00	0,00
327	Bonnet stripes white	X	X	1 589,85	2 148,45
329	Bonnet stripes black	X	X	1 589,85	2 148,45
346	Chrome Line Exterior	X	X	2 167,90	2 929,60
				433,58	585,92
3L2	Piano Black Exterior		X	1 445,21	1 952,99
3AB	Mirror caps in body colour	O	O	0,00	0,00
3AZ	Bonnet stripes, John Cooper Works not with 851 / B86 only with 7KQ		X X X	1 589,85	2 148,45
3BE	Mirror caps Black not with A94	X X	X X	0,00	0,00
3BF	Mirror caps Chili Red only with 7KQ		X X	0,00	0,00
3BG	Mirror caps White not with 850	X X	X X	0,00	0,00
3YR	Softtop MINI Yours	X	X	11 417,74	15 429,38
313	Exterior mirror package	X	X	2 890,59	3 906,21
	in combination with Z3M	X	X	0,00	0,00
	in combination with 430	X	X	0,00	0,00

AUTOMATICS.

X = Optional equipment
O = Standard equipment
= not available

		Cooper	Cooper S	Vejl.ud- salgspris dkr. 85%	Vejl.ud- salgspris dkr. 150%
2TC	Steptronic Sport transmission with double clutch 7-speed only with 2XB / 2XC		X X	16 752,38	24 929,13
2TF	Steptronic transmission with double clutch 7- speed	X	X	15 465,58	23 014,26

COLOURS.



Pepper White



Chili Red



Solaris Orange



White Silver



Melting Silver



Emerald Grey



Thunder Grey



Midnight Black



British Racing Green



Starlight Blue



Electric Blue



Caribbean Aqua



Lapisluxury Blue



Rebel Green

INTERIOR.

X = Optional equipment

O = Standard equipment

= not available

		Cooper	Cooper S	Vejl.lud- salgspris dkr. 85%	Vejl.lud- salgspris dkr. 150%
345	Chrome Line Interior	X	X	2 167,90	2 929,60
430	Interior and exterior mirror package	X	X	6 503,71	8 788,80
	in combination with Z2M	X	X	4 335,81	5 859,20
	in combination with Z3M	X	X	0,00	0,00
431	Interior rear-view mirror with automatic anti-dazzle function	X	X	2 167,90	2 929,60
	in combination with Z2M / Z3M	X	X	0,00	0,00
	in combination with 430	X	X	0,00	0,00
4AQ	Decorative ring of central instrument, black			0,00	0,00
4BD	Interior surfaces Piano Black	X		3 035,06	4 101,44
			X	2 023,43	2 734,37
	in combination with Z2M / Z3M	X	X	0,00	0,00
4C0	Interior colour Satellite Grey	X	X	1 445,21	1 952,99
	in combination with Z2M / Z3M	X	X	0,00	0,00
4C1	Colour Line Carbon Black	O	O		
4C3	Colour Line Satellite Grey	X	X	1 445,21	1 952,99
	in combination with 4GU / 4GV	X	X	0,00	0,00
	only with 4BD / 4DB / 4GU / 4GV				
4DB	Interior surfaces Dark Silver	X		2 457,01	3 320,29
			X	1 445,21	1 952,99
	in combination with Z2M / Z3M	X	X	0,00	0,00
4DC	Interior surfaces Black Chequered		O		
4EP	Interior surfaces Hazy Grey	O			
4F3	Colour Line Glowing Red	X	X	1 445,21	1 952,99
	in combination with 4GU / 4GV	X	X	0,00	0,00
	only with 4BD / 4DB / 4GU / 4GV				
4FQ	Colour Line Malt Brown	X	X	1 445,21	1 952,99
	in combination with 4GU / 4GV	X	X	0,00	0,00
	only with 4BD / 4DB / 4GU / 4GV				
4GU	MINI Yours Interior Style Fibre Alloy	X		5 058,50	6 835,81
			X	4 046,70	5 468,51
	in combination with Z2M / Z3M	X	X	0,00	0,00
	only with 4V9	X	X		
4GV	MINI Yours Interior Style Piano Black illuminated	X		5 058,50	6 835,81
			X	4 046,70	5 468,51
	in combination with Z2M / Z3M	X	X	0,00	0,00
	only with 4V9	X	X		
4V9	MINI Excitement package	X	X	2 745,95	3 710,75
	in combination with 7KQ	X	X	0,00	0,00
	in combination with Z1M / 7Y1	X	X	0,00	0,00
	in combination with Z2M / Z3M / 7Y2	X	X	0,00	0,00
	only with 563	X	X		

INTERIOR.



COLOUR LINES (1)



Carbon Black



Malt Brown



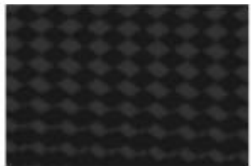
Satellite Grey



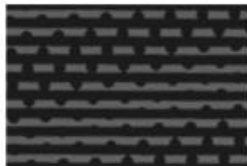
Glowing Red

INTERIOR PANELS

(2), (3), (4)



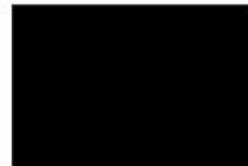
Hazy Grey



Black Checkered



Dark Silver



Piano Black



MINI Yours Interior
Style Fibre Alloy

INFOTAINMENT OPTIONS.



Top to bottom, left to right

7GK Connected Navigation plus
7GG Connected Media
6AD Head-up Display

7GH Connected Navigation
3AG Reversing camera



