

PRISLISTE MINI CLUBMAN

FROM 1ST OF JANUARY 2019.



EXAMPELS OF STANDARD EQUIPMENT ON THE MINI CLUBMAN:

- Dynamic brake lights
- ISOFIX child seat mounting Front & Rear
- Anti-Lock braking system (ABS)
- Crash sensor
- Electronic braking force distribution
- Tire pressure monitoring system (TPMS)
- Two stage Airbag system
- Side airbags
- Airbag deactivation by key
- Brake wear indicator
- Electrically adjustable exterior mirrors
- Engine start & stop function
- Rain sensor
- Remote control key with driver profiles
- Choose any colour you want*
- AUX and USB in connections
- 16" Alloy wheels, 2EX
- Air conditioning
- Heated windscreen washer jets
- Heated exterior mirrors
- Seat heating for driver and front passenger
- Warning triangle
- Central locking system
- Mechanically adjustable seats
- Adjustable steering column
- Foldable backseat
- Locking wheel bolts for alloy wheels
- Electronic vehicle immobiliser
- eCall emergency system
- Multifunction steering wheel

*Except "Rebel Green" and "Lapsis luxury blue"

In addition on Cooper S

- 17" alloy wheels, 2HU
- Performance control
- Sport leather steering wheel
- Two chromed exhaust pipes
- Sport seats
- More colours to choose from

In addition on John Cooper Works

- 18" alloy wheels, 2WN
- Comfort access
- Anthracite head liner
- Sport suspension settings
- Rear spoiler
- LED head lights
- JCW steering wheel
- JCW sport seats
- Driving modes selector
- PDC rear
- Alarm

TECHNICAL SPECIFICATION.

MINI Clubman

	Effekt hk	Forbrug km/l (WLTP)	Forbrug km/l (NEDC)	CO ₂ emission (WLTP)	CO ₂ emission (NEDC)	Energi- klasse WLTP (MAX)	Energi- klasse WLTP (MIN)	Vejl. udsalgs- pris dkr.
COOPER CLUBMAN	136	15,4	17,2	148	131	B	A	295 700
COOPER S CLUBMAN	192	13,5	15,2	168	151	B	B	373 900

Priserne er gældende for produktion fra 1. januar 2019 og frem til ny prisliste fremkommer.

Prisen er inkl. leveringsomkostinger på kr 3980,-

Udstyrpriser är baseret på 85% afgift.

Vedfælde af tilvalg af optioner kan nogle optioner blive beregnet på 150% afgift.

Der tages forbehold for evt. fejl og ændringer, samt ændring i registreringsafgift.



Det anførte brændstofforbrug og CO₂-udledning er fastsat i henhold til Europa-Parlamentets og Rådets forordning (EF) 715/2007 af 20. juni 2007 gældende på tidspunktet for typegodkendelsen af det pågældende køretøj. De anførte tal er baseret på et køretøj med det standardudstyr, som køretøjet leveres med, og det viste interval er baseret på de forskellige konfigurationsmuligheder (standardudstyr og ekstraudstyr). De modeller, der er afbildet, afspejler biler, der forhandles på det tyske marked. Der kan dermed forekomme afvigelser fra de beskrevne modelvarianter og det beskrevne udstyr i forhold til biler, der forhandles i Danmark. Du kan få yderligere oplysninger hos din MINI forhandler. Brændstofforbruget, CO₂-udledningerne og strømforbrug er fastsat ud fra den nye WLTP-norm (Worldwide Harmonized Light Vehicles Test Procedure). Registreringsafgiften er baseret på, blandt andet, bilens brændstofforbrug. Beregningen af registreringsafgiften baseres i Danmark, frem til 1. april 2019, på en korreleret værdi af det opnåede WLTP-testresultat. Mere information om udledninger og WLTP-kørecyklussen findes på <https://www.mini.com/consumptionandemissions>.

En oversigt over brændstofforbrug, CO₂-udledninger og strømforbrug for alle nye personbilmodeller fås gratis på alle salgssteder, og kan derudover ses på Trafikstyrelsens hjemmeside www.bilviden.dk.

Generelle vilkår og ansvarsfraskrivelse.

Vi tager forbehold for fejl og mangler. Vi tilstræber, at indholdet er ajour, men vi kan ikke garantere, at indholdet til enhver tid er korrekt. MINI.dk kan ikke betragtes som en komplet guide til vores produkter og ydelser. BMW Danmark A/S forbeholder sig retten til når som helst at foretage ændringer i priser, specifikationer og udstyr. For mere information om bilernes standard- og ekstraudstyr se <https://www.mini.dk/downloads>.

PACKAGES FOR THE MINI CLUBMAN.

Z1M Essential

Sport leather steering wheel
 Armrest front
 PDC front and rear
 Parking assistant
 Automatic Air conditioning
 Cruise control with braking function
 LED foglights
 LED headlights
 Connected Media
 Floor mats
 Height adjustment for front passenger seat
 Storage compartment package
 Light package

Z2M Experience

in addition to Essential
 MINI Yours interior illuminated
 Foldable back rest 40/20/40
 17 vent spoke
 Luggage net
 Excitement package
 Interior mirror with anti-dazzle
 Connected Navigation

Z3M Maximise

in addition to Experience
 Chili or JCW-package
 Comfort access system
 Sport seats for driver and front passenger
 MINI Driving Modes
 Interior and exterior mirror package
 Exterior mirror pack
 Active Cruise Control
 HiFi loudspeaker system Harman Kardon
 Driving assistant
 MINI Head-Up Display
 Rear view camera
 yours leather
 Connected Navigation Plus

Model			Essential	Experience	Maximise
F54	JZ31	COOPER CLUBMAN	330 665	345 465	494 383
F54	JZ51	COOPER S CLUBMAN	417 710	437 710	587 710

Prices are valid for production from 1st of January 2019 and until a new pricelist is published.

Prices include delivery fee of 3980 DKK.

Option prices are based on 85% in registration fee.

When choosing options, some of them can become calculated with 150% in registration fee.

Data are based on base model with standard wheel. An upgrade of wheel can lead to increased emissions and fuel consumption.

COLOURS.



Moonwalk Grey metallic



Pepper White uni



Chili Red uni



Pure Burgundy metallic



Melting Silver metallic



White Silver metallic



Emerald Grey



Thunder Grey metallic



Midnight Black metallic



British Racing Green metallic



Starlight Blue



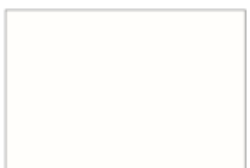
MINI Yours
Lapisluxury Blue uni



Rebel Green uni



Melting Silver metallic



Aspen White uni

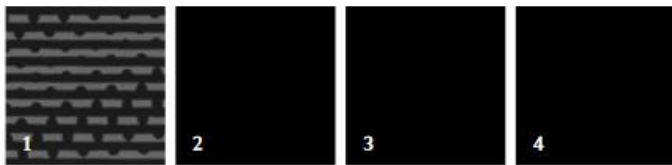


Jet Black uni

INTERIOR.

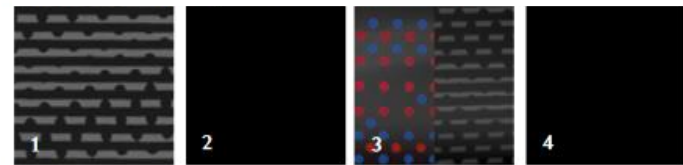


Interior Panel Piano Black (4BD)



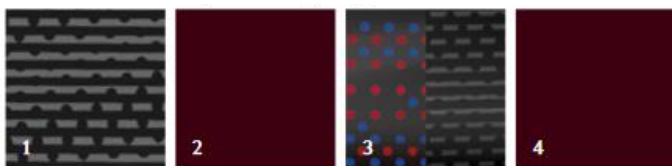
1 Black chequered 2 Piano Black 3 Piano Black 4 Piano Black

MINI Yours, Piano Black illuminated, (4GV)



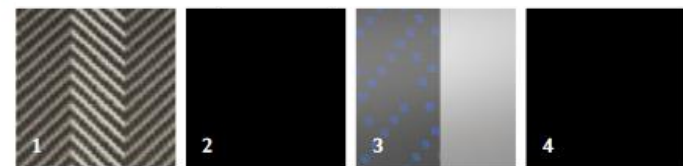
1 Black chequered 2 Piano Black 3 Piano black illumi, Piano black 4 Piano Black

MINI Yours, Pure Burgundy, illuminated (4GW)



1 Black chequered 2 Pure Burgundy 3 Piano black illumi, Piano black 4 Pure Burgundy

MINI Yours, Fibre alloy illuminated, (4GX)



1 Fibre Alloy 2 Piano Black 3 Dark silver illumi, Dark silver 4 Piano Black

INTERIOR.

X = Optional equipment
 O = Standard equipment
 = not available

		Cooper	Cooper S	Vejlud- salgspris dkr. 85%	Vejlud- salgspris dkr. 150%
345	Chrome Line Interior	X	X	2 312,37	3 124,83
430	Interior and exterior mirror package	X	X	7 081,76	9 569,95
	only with 313 + 431	X	X		
	In combination with Z2M	X	X	4 624,75	6 249,66
	In combination with Z3M	X	X	0,00	0,00
431	Interior rear-view mirror with automatic anti-dazzle function	X	X	2 457,01	3 320,29
	in combination with 430	X	X	0,00	0,00
	In combination with Z2M / Z3M	X	X	0,00	0,00
4AA	Headliner anthracite	X	X	3 324,18	4 492,13
	in combination with 7KQ	X	X	0,00	0,00
4BD	Interior surfaces Piano Black	X	X	2 745,95	3 710,75
	in combination with Z2M / Z3M	X	X	0,00	0,00
4BR	Interior surfaces Grey Chequered		O	0,00	0,00
4C0	Interior colour Satellite Grey	X	X	2 167,90	2 929,60
	only with 4BD / 4GV / 4GW / 4GX	X	X		
4EP	Interior surfaces Hazy Grey	O		0,00	0,00
4GV	MINI Yours Interior Style Piano Black illuminated	X	X	5 636,55	7 616,96
	in combination with Z2M / Z3M	X	X	0,00	0,00
	only with 4V9	X	X		
4GW	MINI Yours Interior Style Pure Burgundy illuminated	X	X	5 636,55	7 616,96
	in combination with Z2M / Z3M	X	X	0,00	0,00
	only with 4V9	X	X		
4GX	MINI Yours Interior Style Fibre Alloy illuminated	X	X	6 359,24	8 593,57
	in combination with Z2M / Z3M	X	X	722,69	976,61
	only with 4V9	X	X		
4V9	MINI Excitement package	X	X	3 757,76	5 078,05
	in combination with 7KQ	X	X	0,00	0,00
	In combination with Z2M / Z3M / 7Y2	X	X	0,00	0,00
	only with 3AB				
	only with 563	X	X		

EXTERIOR.

X = Optional equipment
O = Standard equipment
= not available

		Cooper	Cooper S	Vejlud- salgspris dkr. 85%	Vejlud- salgspris dkr. 150%
320	Model designation, deletion not with 3A7 / 3A8	X	X	0,00	0,00
314	Heated windscreen washer jets	O	O		
325	Rear spoiler in combination with 7KQ	X	X	2 745,95	3 710,75
	only with 3A1	X	X	0,00	0,00
327	Bonnet stripes white	X	X	1 734,32	2 343,68
329	Bonnet stripes black	X	X	1 734,32	2 343,68
346	Chrome Line Exterior	X	X	2 312,37	3 124,83
				578,05	781,15
382	Roof and mirror caps white	X	X	0,00	0,00
383	Roof and mirror caps black	X	X	0,00	0,00
386	Roof rails	X	X	3 324,18	4 492,13
3A3	Roof and mirror caps red not with 851			0,00	0,00
3A7	Sport Stripes Black			3 468,65	4 687,36
3A8	Sport Stripes Red not with 851			3 468,65	4 687,36
3AB	Mirror caps in body colour in combination with 7KQ	O	O	0,00	0,00
	in combination with 7Y2 / 7Y1			0,00	0,00
3AF	Roof and mirror caps silver only with A94 / B22 / B58 / B69 / B83 / C24 /	X	X	2 167,90	2 929,60
420	Sun protection glazing	X	X	5 058,50	6 835,81
313	Exterior mirror package in combination with 430	X	X	3 613,11	4 882,59
	In combination with Z3M	X	X	0,00	0,00

AUTOMATICS.

X = Optional equipment
O = Standard equipment
= not available

		Cooper	Cooper S	Vejlud- salgspris dkr. 85%	Vejlud- salgspris dkr. 150%
2TF	Steptronic transmission with double clutch	X	X	17 972,70	24 287,43
2TC	Steptronic Sport transmission with double clutch only with 2XB / 2XC		X	19 391,60	26 204,86

SINGLE OPTIONS.

X = Optional equipment
 O = Standard equipment
 = not available

		Cooper	Cooper S	Vejlud- salgspris dkr. 85%	Vejlud- salgspris dkr. 150%
7KQ	John Cooper Works Trim	X		28 905,43	39 061,40
	Only with Z3M		X	23 847,11	32 225,82
	not with 7Y0 / 7Y2	X	X		
	Equipment: 2EL + 2XC (alternatively: 2XB) + 322 + 325 + 3A1 + 423 + 450 (alternatively: 459) + 473 + 493 + 4AA + 4V9 + 4VA + 507 (alternatively: 508) + 534 + 544 (alternatively: 541) + 563 + 5A1 + 5A2 (alternatively: 5A4)	X	X		
223	Adaptive suspension	X	X	7 226,40	9 765,41
	only with 4VA	X	X		
226	Sport suspension settings	X	X	3 468,65	4 687,36
	in combination with 7KQ	X	X	0,00	0,00
235	Trailer tow hitch with removable ball head	X	X	11 562,21	15 624,61
	only with 493	X	X		
302	Alarm system	X	X	5 058,50	6 835,81
322	Comfort access system	X	X	5 636,55	7 616,96
	In combination with Z3M	X	X	0,00	0,00
359	Visibility package	X	X	2 167,90	2 929,60
3AG	Rear view camera	X	X	5 492,08	7 421,73
	In combination with Z3M / 7Y2	X	X	0,00	0,00
402	Panorama glass roof	X	X	14 163,69	19 140,12
459	Seat adjustment, electric, with memory	X	X	18 065,92	24 413,41
	In combination with Z1M / Z2M	X	X	17 343,23	23 436,79
	In combination with Z3M	X	X	17 343,23	23 436,79
4VA	MINI Driving Modes		X	4 046,70	5 468,51
	In combination with Z3M	X	X	2 601,48	3 515,52
		X	X	0,00	0,00
541	Active Cruise Control	X	X	5 781,02	7 812,19
	In combination with Z1M / Z2M / 7Y2	X	X	2 167,90	2 929,60
	In combination with Z3M	X	X	0,00	0,00
	only with 5AS	X	X		
5AS	Driving Assistant	X	X	8 527,14	11 523,17
	In combination with Z3M	X	X	0,00	0,00
654	DAB tuner	X	X	3 613,11	4 882,59
674	HiFi loudspeaker system Harman Kardon	X	X	11 417,74	15 429,38
	In combination with Z3M	X	X	0,00	0,00
6AD	MINI Head-Up Display	X	X	8 671,61	11 718,40
	In combination with Z3M	X	X	0,00	0,00
6NW	Telephony with wireless charging	X	X	5 781,02	7 812,19
	In combination with Z3M	X	X	0,00	0,00
	only with 2XB / 2XC	X	X		

INFOTAINMENT OPTIONS.



Top to bottom, left to right

7GK Connected Navigation plus
7GG Connected Media
6AD Head-up Display

7GH Connected Navigation
3AG Reversing camera

